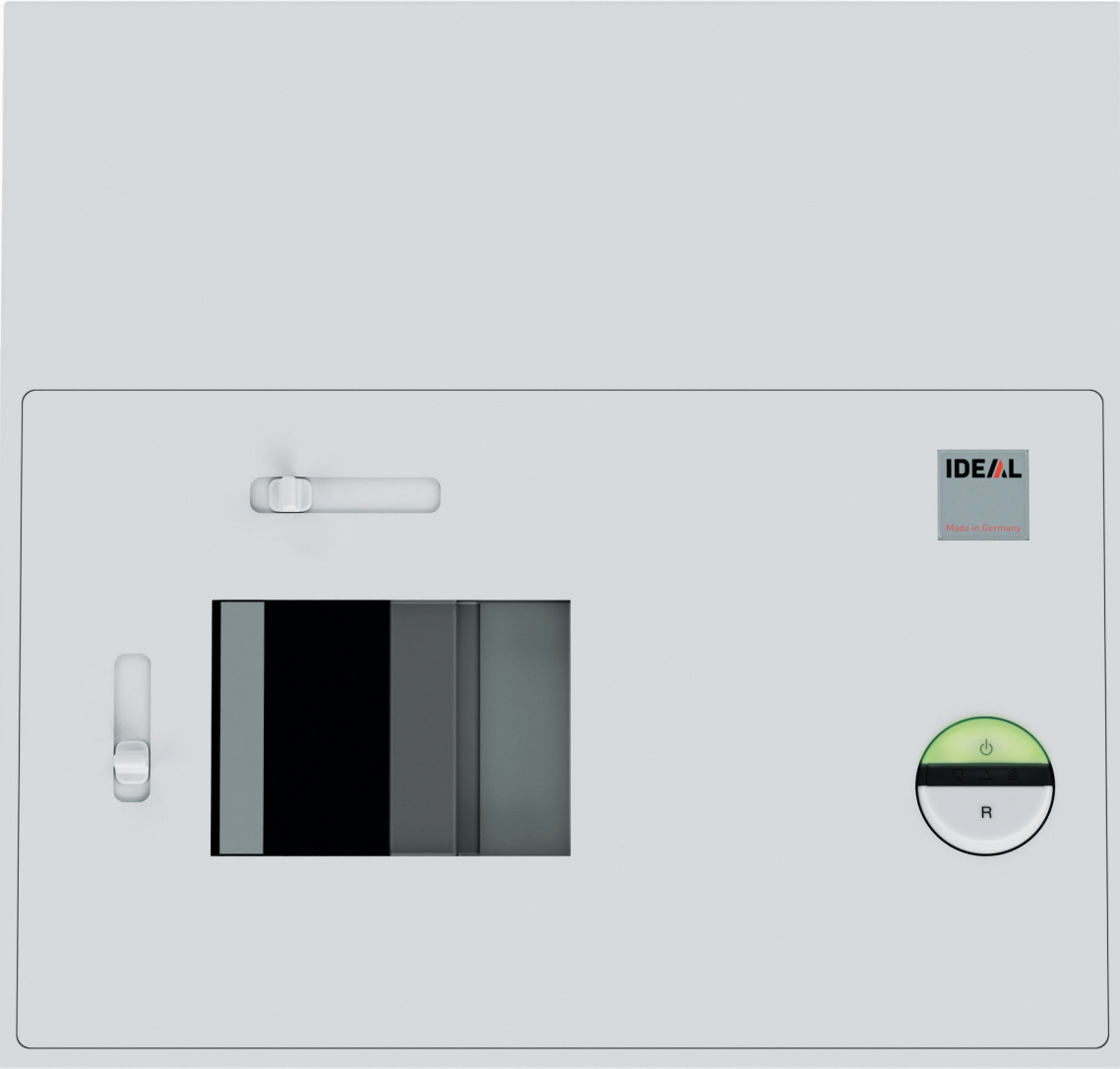


Hard drive punch



Severe security risk on discarded hard drives.

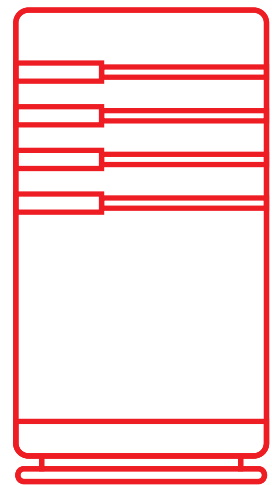
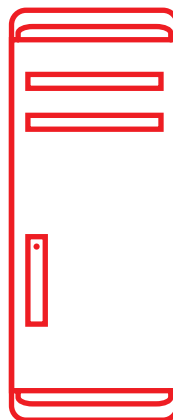
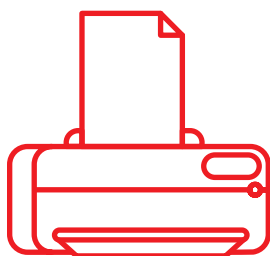
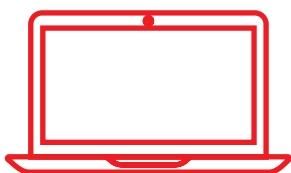
Destroy old data carriers, not your good reputation.

These hard drives, which may contain internal, confidential or secret information including customer and personnel data, invoices, or strategic documents, can end up in the wrong hands if they leave the premises intact. Potential risks and dangers lurk especially when:

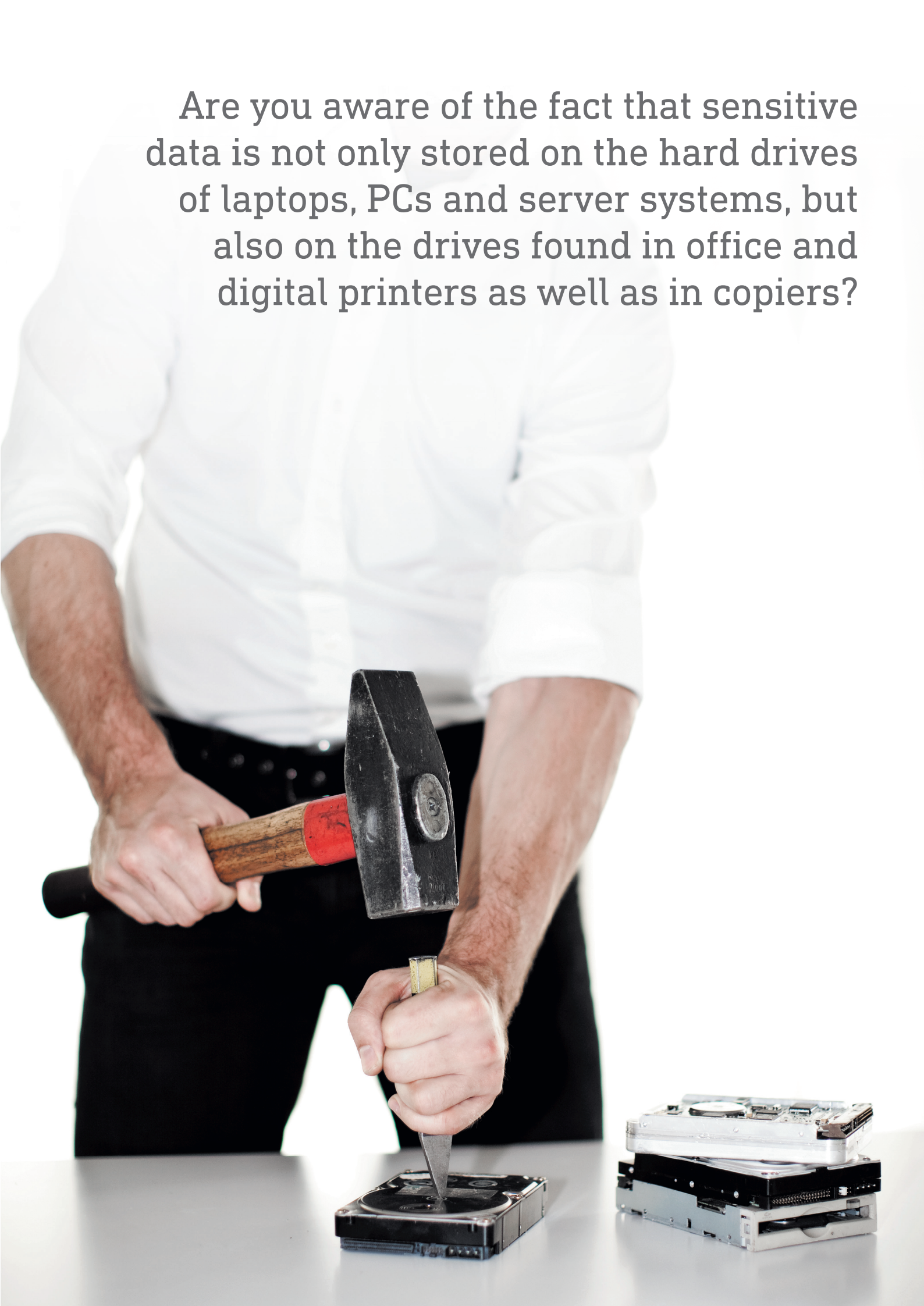
- replacing discarded or defective hard drives
- returning equipment at the end of leasing cycles
- trading-in used equipment

Make your old data storage devices unusable.

Simple erasing or overwriting the data on hard drives does not provide adequate security. The physical destruction of the hard drive might work, but not in the office. It's dangerous and time consuming, especially when large quantities of hard drives are involved. Sophisticated destruction processes like thermal destruction or degaussing require extremely expensive equipment or an external service provider.



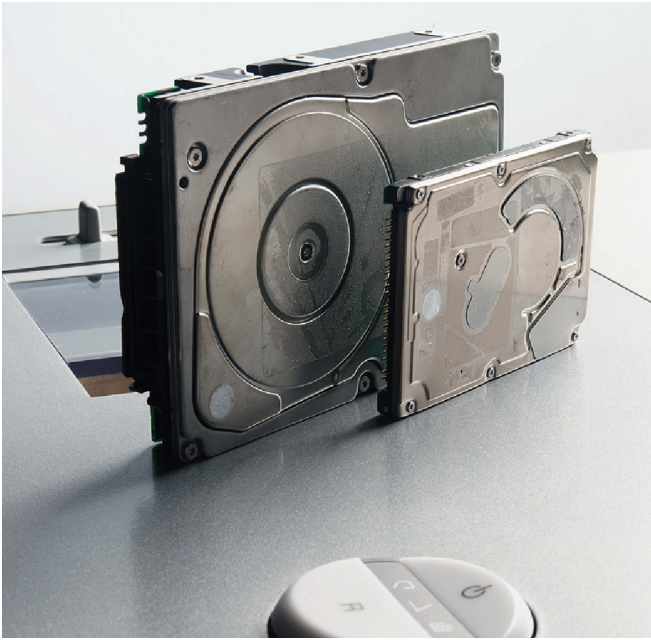
Are you aware of the fact that sensitive data is not only stored on the hard drives of laptops, PCs and server systems, but also on the drives found in office and digital printers as well as in copiers?



Take the necessary security measures for your sensitive data in your own hands.

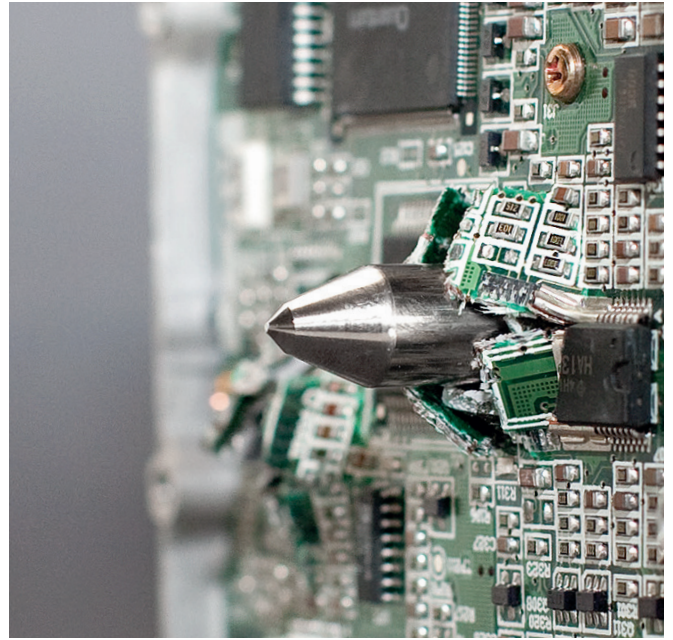
IDEAL 0101 HDP: The office-solution to make discarded hard drives unusable.





Suitable for 3.5" and 2.5" hard drives

The IDEAL 0101 hard drive punch is designed for the two most common hard drive sizes. A convenient handy slide lever adjusts the feed chute of high quality steel to the 3.5" or 2.5" sizes.



Punching die from high-grade tool steel

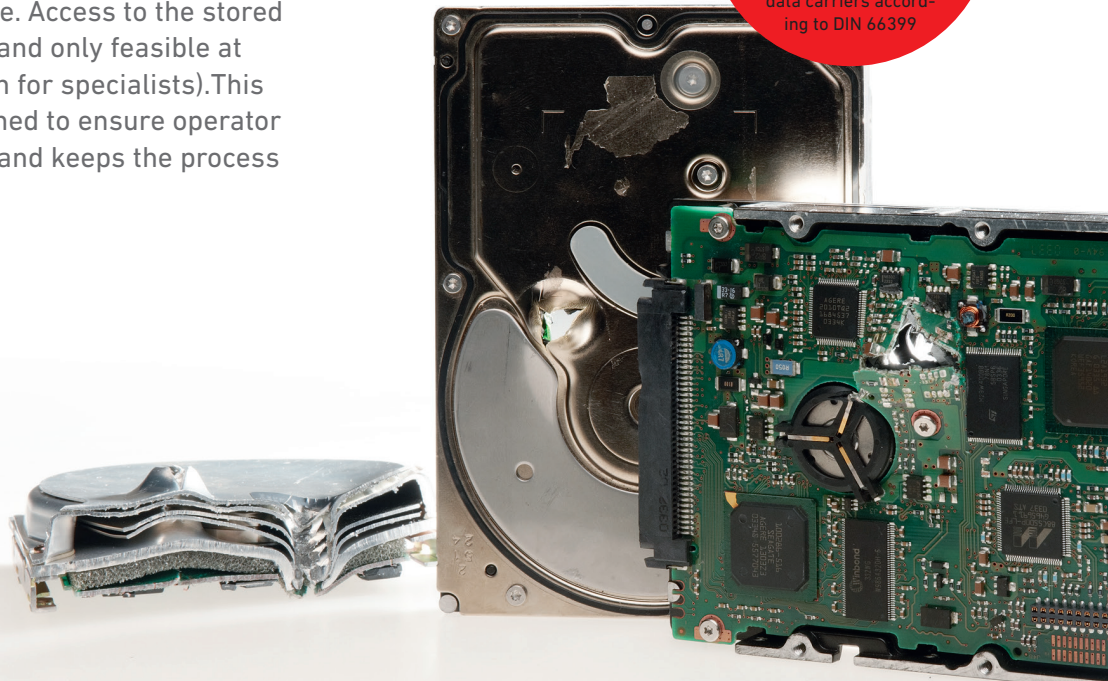
The high-quality punching die is made of hardened, nickel plated tool steel. In combination with the sturdy "Twin Drive System" and a quiet and powerful 640 watt single phase motor rated for continuous operation, durability is guaranteed.

To be on the safe side, choose the IDEAL hard drive punch.

The size of the hard drive punch IDEAL 0101 HDP is about the same as a standard office shredder. At the push of a button, a metal punching die punches a hole completely through the hard drive rendering it unusable. Access to the stored data is nearly impossible and only feasible at extremely high costs (even for specialists). This effective solution is designed to ensure operator safety, is easy to operate, and keeps the process under your control.

**LEVEL
H-3**

Certified destruction of data carriers according to DIN 66399



Hard drive punch IDEAL 0101 HDP

Total security for your electronically stored data.

The hard drive punch is suitable for both small and large companies, for authorities as well as for administrations. Simple and safe operation at the touch of a button. Practical collection of the destroyed hard drives in a plastic container inside the cabinet, ready for further destruction or recycling.

A

Feeding chute with safety flap

To protect the operator, a safety interlock prevents the unit from functioning while safety flap is open. After the punching process the hard drive punch stops automatically.

B

EASY-SWITCH for intuitive operation

Multifunction control element with integrated optical signals indicates the operational status. Features include many automatic functions for safe and easy operation.

C

High-quality wooden cabinet

Wooden cabinet (mobile on castors) with front opening door for easy removal of the plastic bin.

Power connection: 230 V / 50 Hz
(other voltages available)

Dimensions (H x W x D): 850 x 495 x 470 mm

Weight: 63 kg





Full control

Your discarded hard drives leave your premises only after they have been destroyed. You keep the destruction process under your control.



Reduced costs

The hard drive punch pays for itself within a short period of time. Costly external service providers are no longer needed.



Made in Germany

You invest in proven quality, durability and a thoroughly safety-tested product.



